

**Guide for Firmware Upgrade Via  
USB Interface  
(For Windows)**

**File No.: HC-QE14-0004**

# Contents

1. Operating Environment .....	2
2. Preparation.....	2
3. Select Firmware .....	2
4. Upgrade Firmware .....	3
5. Cancel upgrade .....	4

## Document Revision History

Version	Date	Page	Update Details
A0	Nov. 15, 2013	all	First Issued

# 1. Operating Environment

Operating system: Windows XP, Windows 7 and Windows 8.

## 2. Preparation

- 1) Prepare the firmware that you need to update (\*.bin)
- 2) Double click “UpgradeTool.exe” (like Figure 2-1), and then the diagram will be showed on screen as Figure 2-2.



Figure 2-1

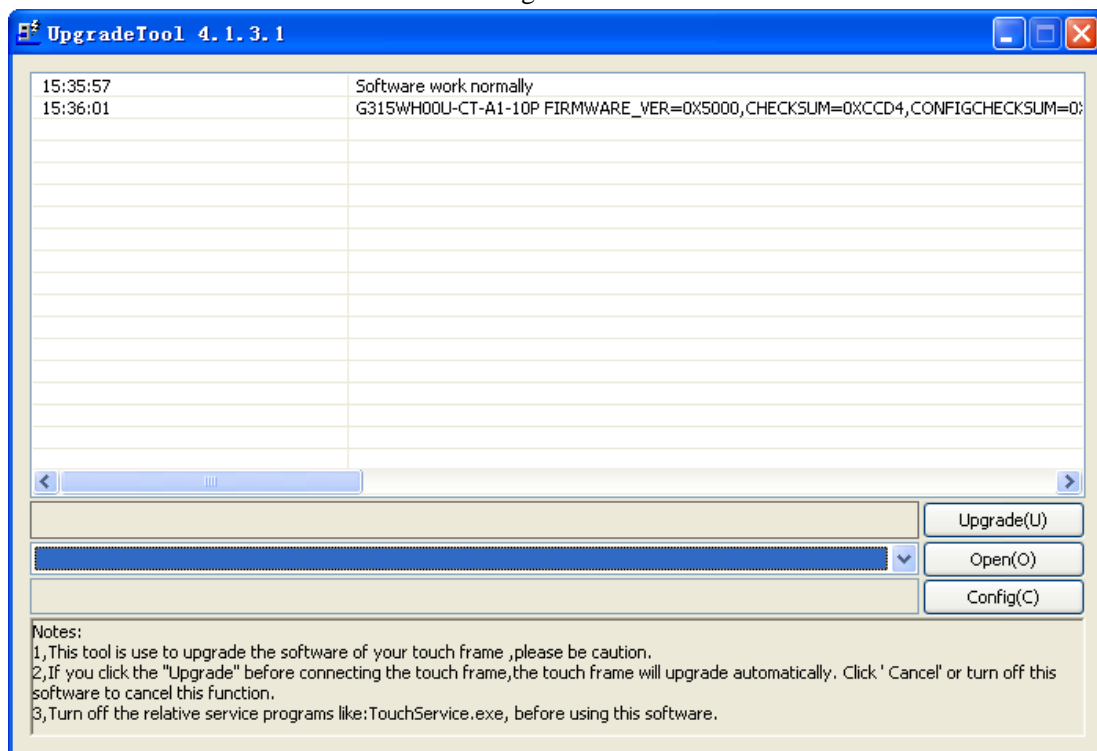


Figure 2-2

## 3. Select Firmware

Three optional ways to select firmware as below:

- 1) Click “Open” and then select the firmware that you want to upgrade (\*.bin). If the device were PG series, G series or E series, please click “Config (C)”, select a configuration file, then click “Open”.

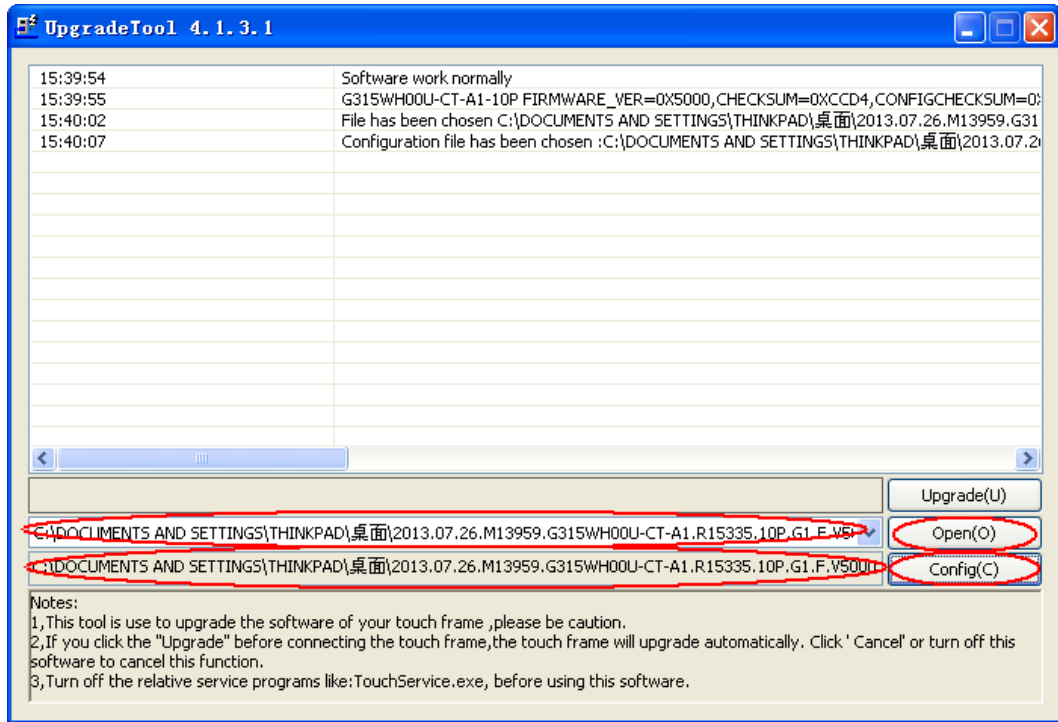


Figure 3-1

2) Press “O” on keyboard, select the firmware that you want to upgrade (\*.bin.), Or click “C” on keyboard, select the firmware that you want to upgrade (\*.bin.), then click “Open”.

3) If device have connected to computer successful, you can drag the bin or config file to the software interface.

## 4. Upgrade Firmware

Three optional ways to upgrade firmware as below:

1) Plug USB connector of the device, click “Upgrade (U)” button; upgrade successful if progress bar change from blue color to green (Figure 4-2).

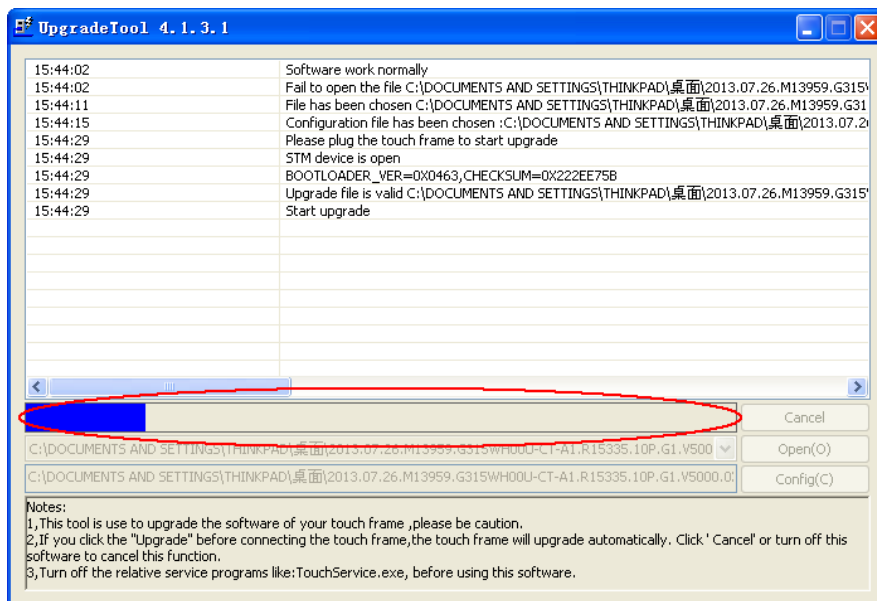


Figure 4-1

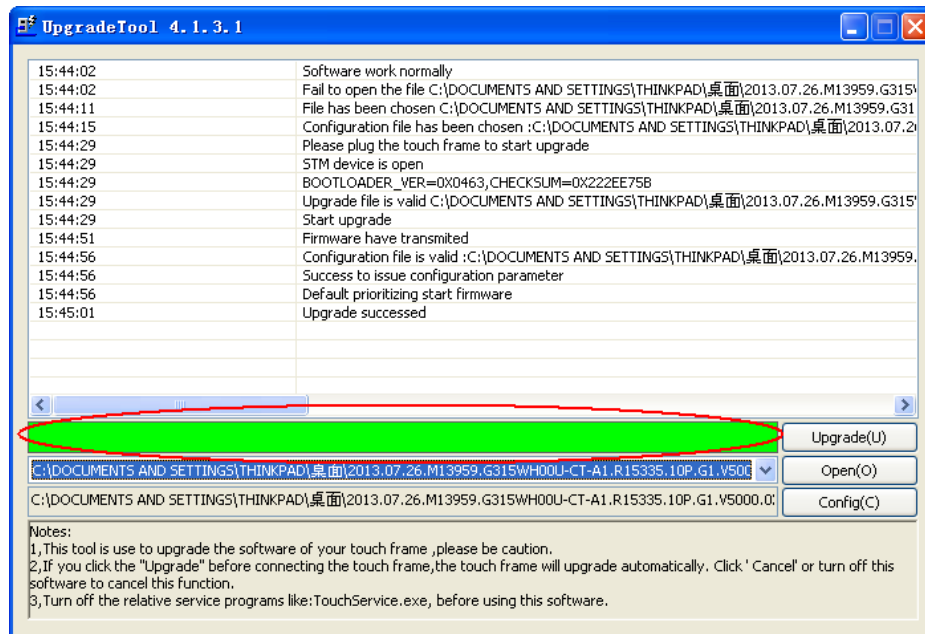


Figure 4-2

- 2) Plug USB connector of the device, press “U” on keyboard to upgrade.
- 3) Click “Upgrade (U)” or press “U” on keyboard, then plug USB connector of the device to upgrade.

## 5. Cancel upgrade

When upgrading, if select the wrong firmware, you can cancel upgrade in 5 seconds by clicking “Cancel” (Figure5-1). If the “Cancel” button disable, it can’t be canceled and firmware will be replaced (Figure5-2).

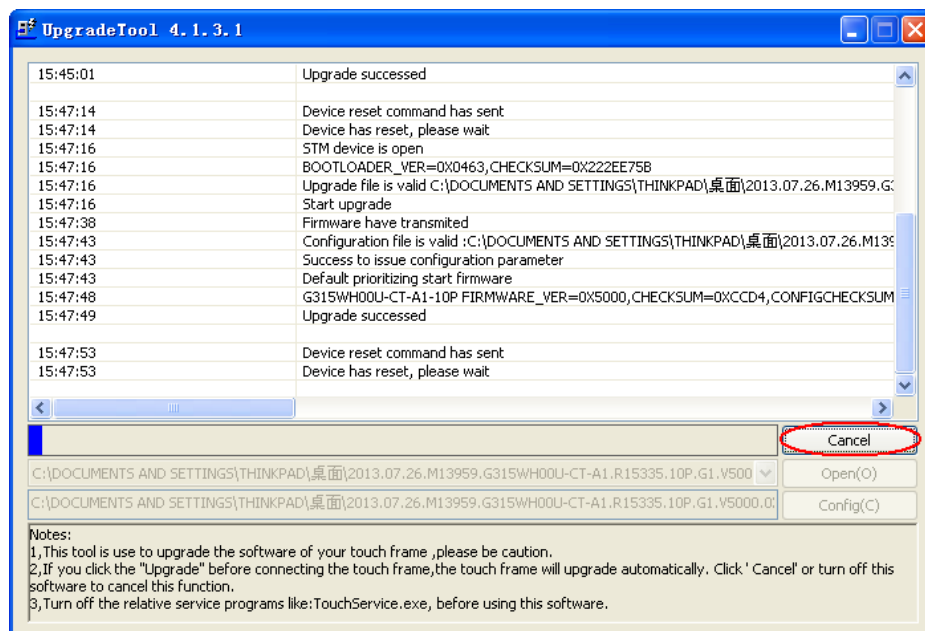


Figure 5-1

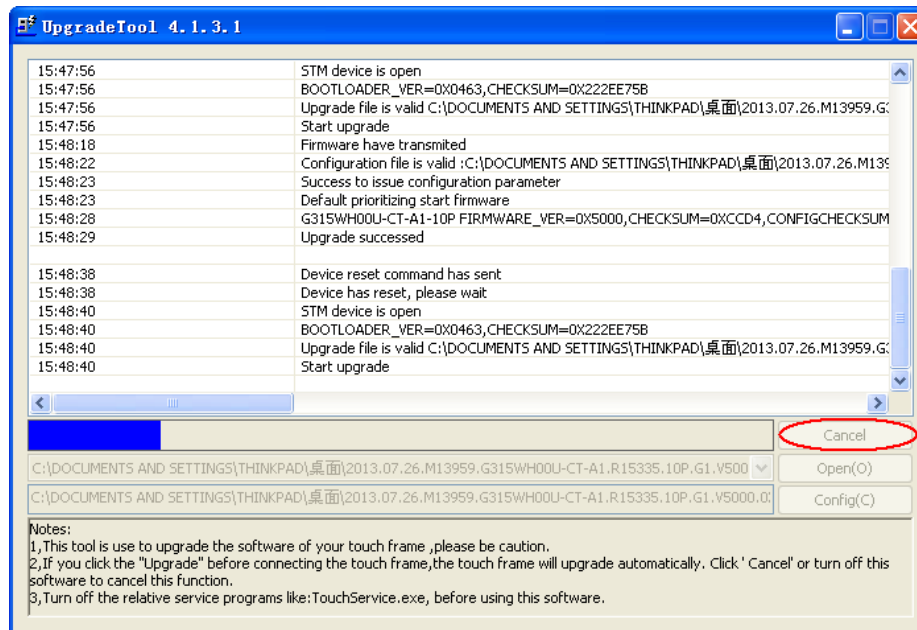


Figure 5-2

**Notice:**

1. Please shut down other software (e.g. service program, test program etc.), when operating the upgrade software, or it will conflict. At the same time, the upgrade software will check these programs and try to shut them down automatically. If can't, it would prompt user to turn it off by hand.

2. The Software version that shows in figures only use for the function description in this manual, not indicate the user's software version.